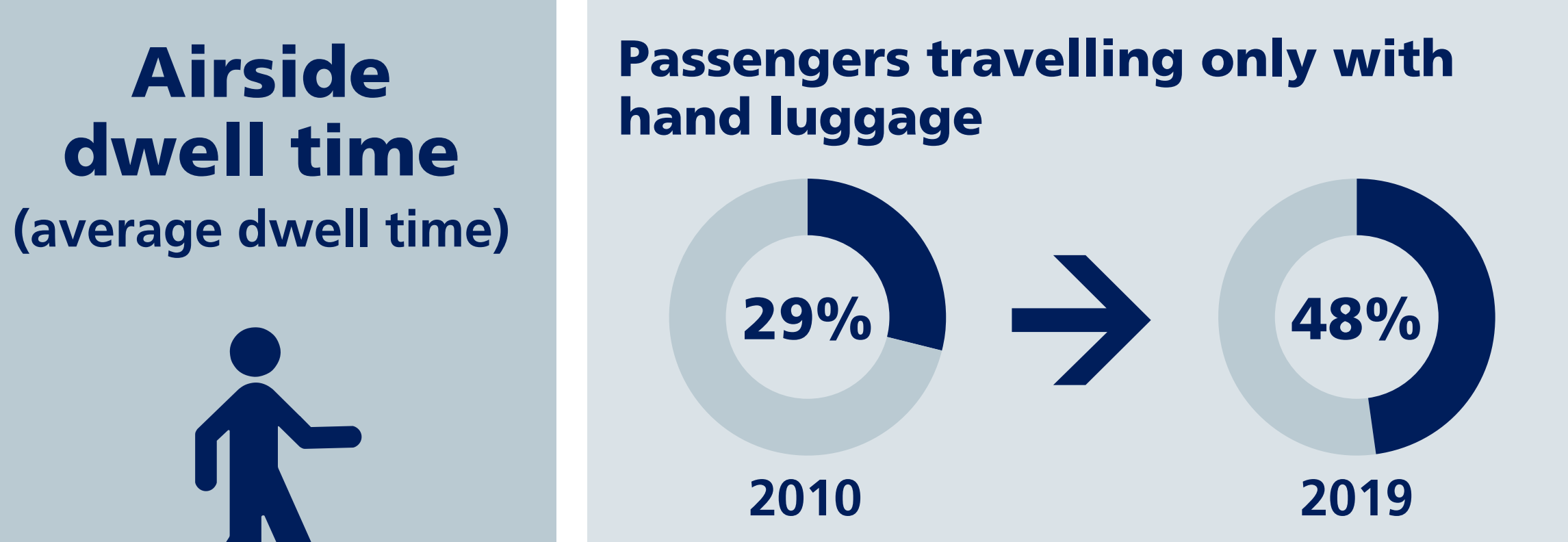
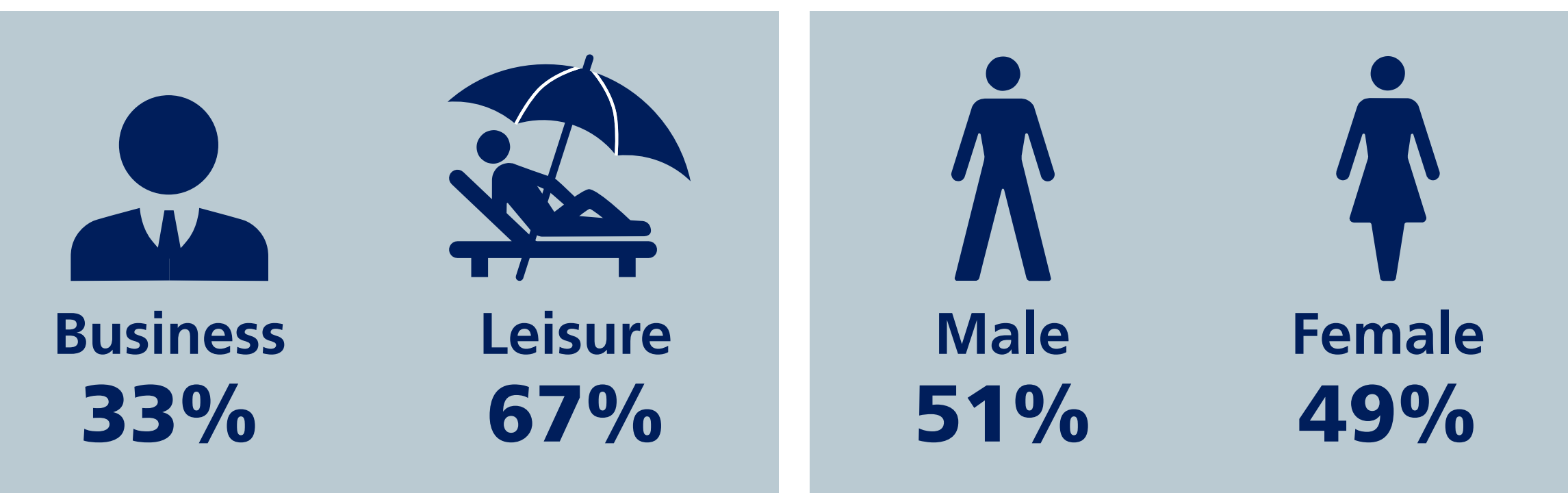
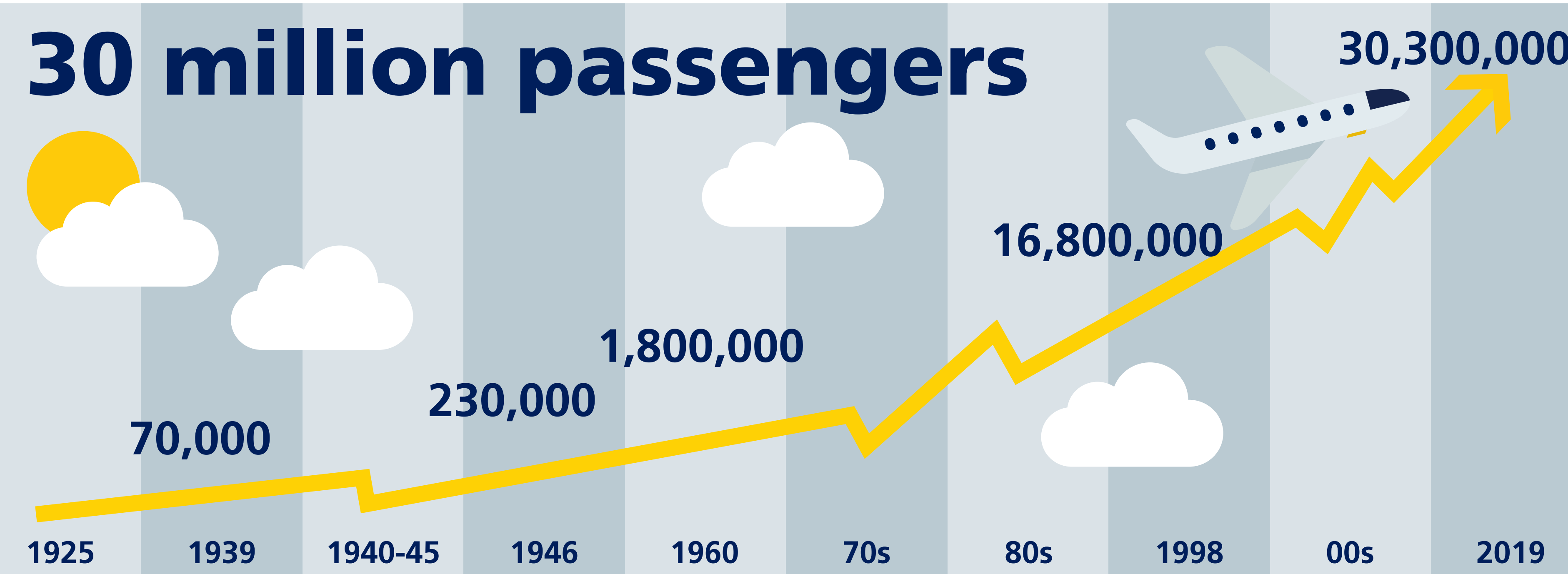
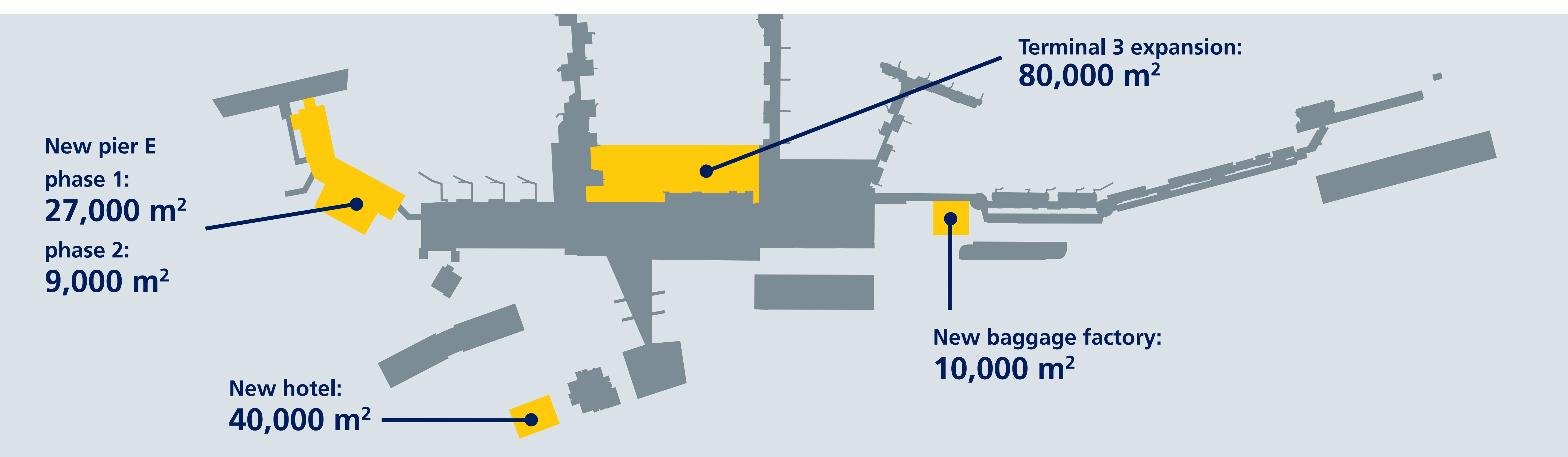


Key Facts & Figures 2019

Passenger info



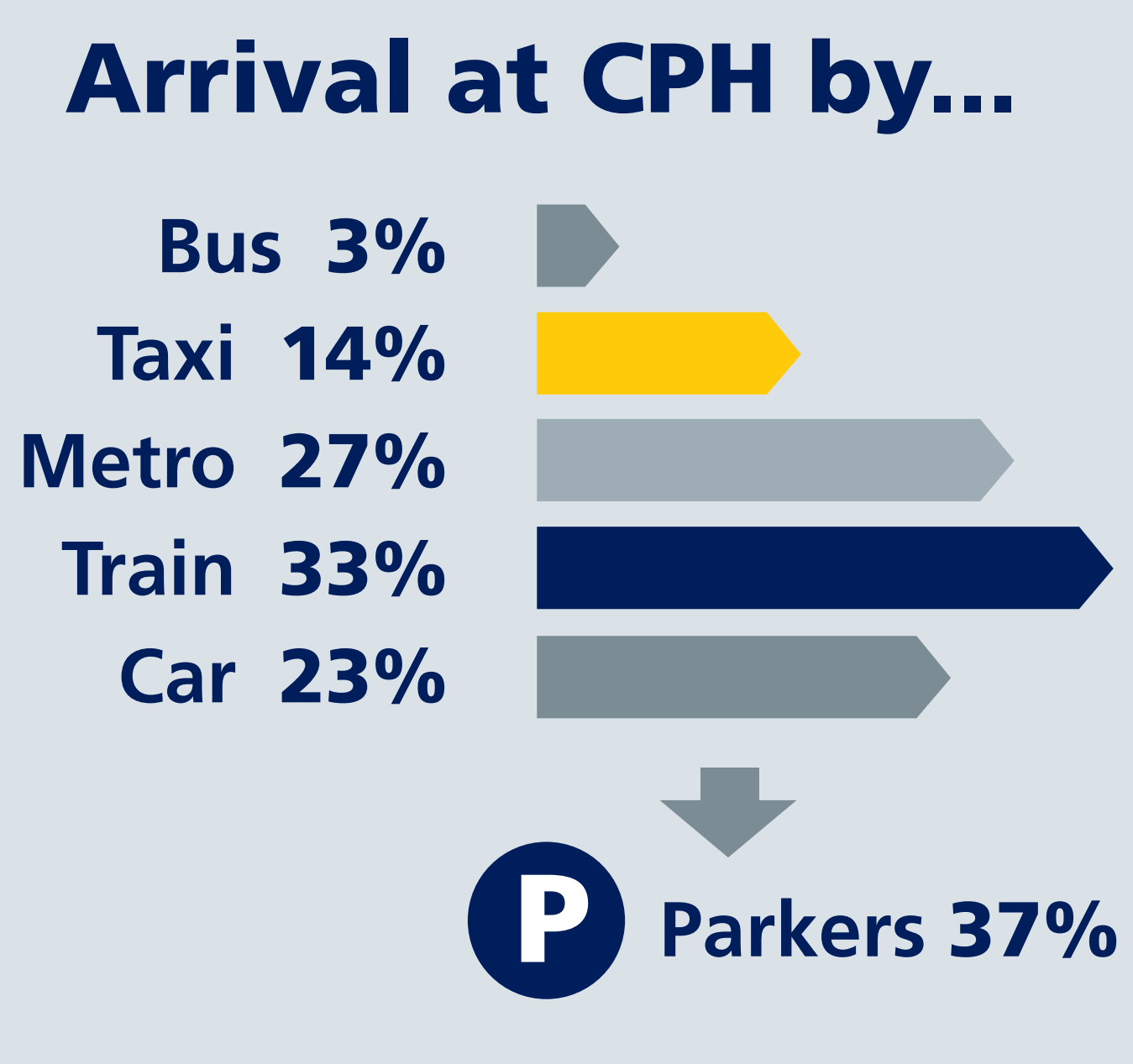
Major building projects



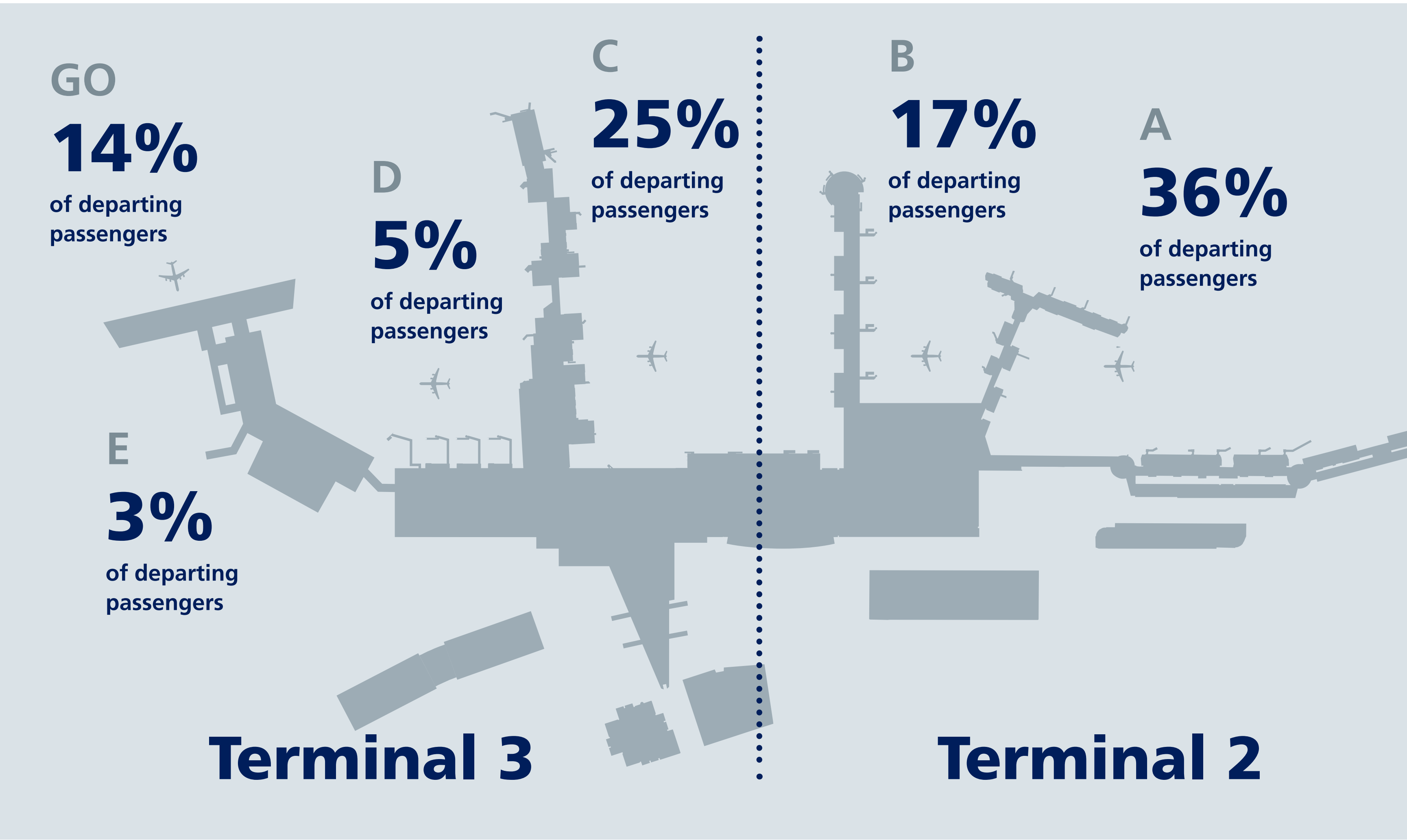
Average number of passengers per day
82,895

2019
28 JUNE
Busiest day
109,408 passengers
Number of days above 100,000: **47**

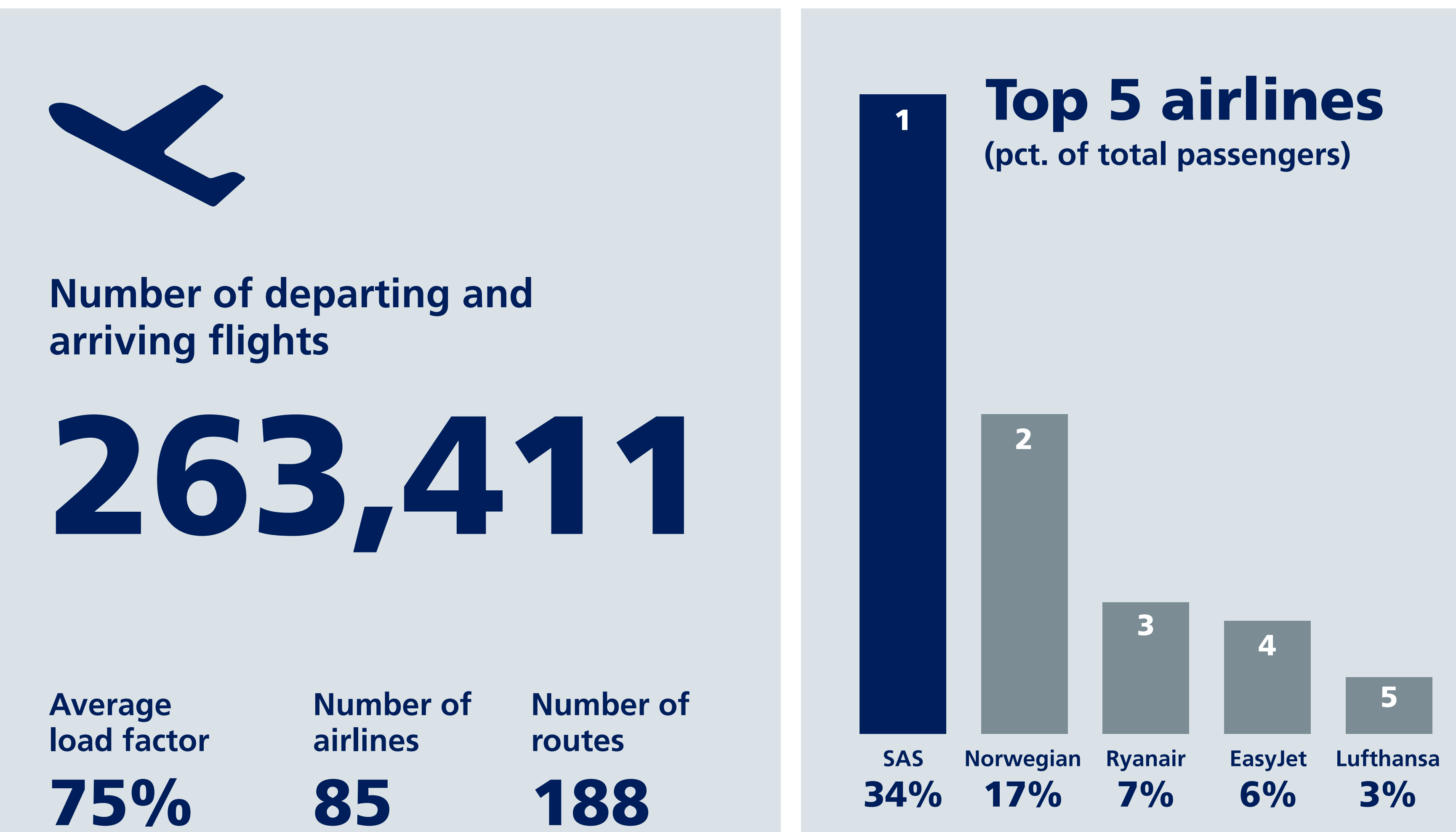
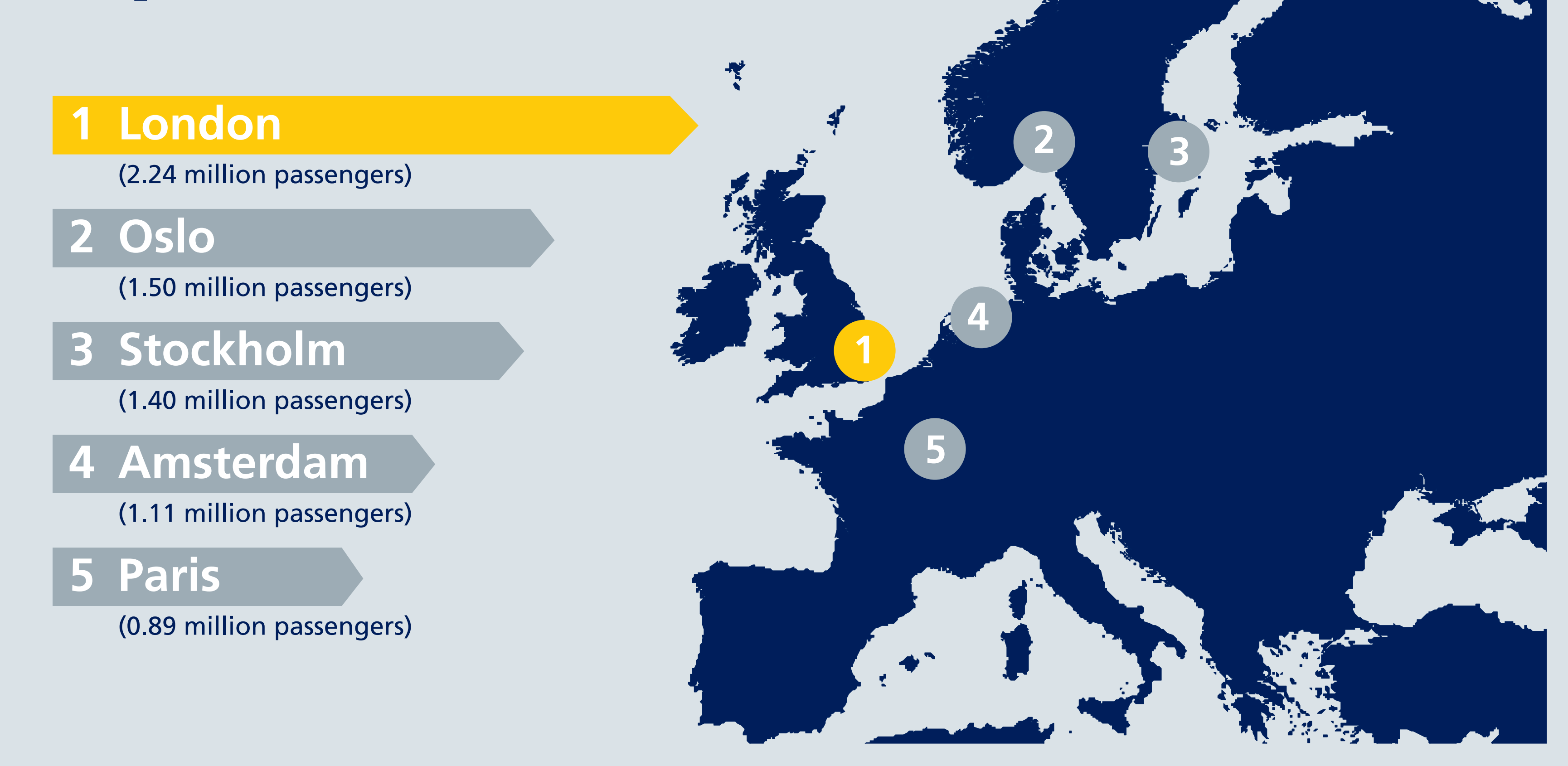
Overall satisfaction
86%
Passengers rating overall satisfaction in top 2 scores (4 or 5 = "very good" / "excellent")
Source: Airport Service Quality



Airport info



Top 5 destinations



Number of departing and arriving flights: **263,411**

Average load factor: **75%**

Number of airlines: **85**

Number of routes: **188**

Number of long-haul routes: **43**

Freight transported through CPH: **345,000 tonnes**

Airport employees (ID cardholders): **22,100**

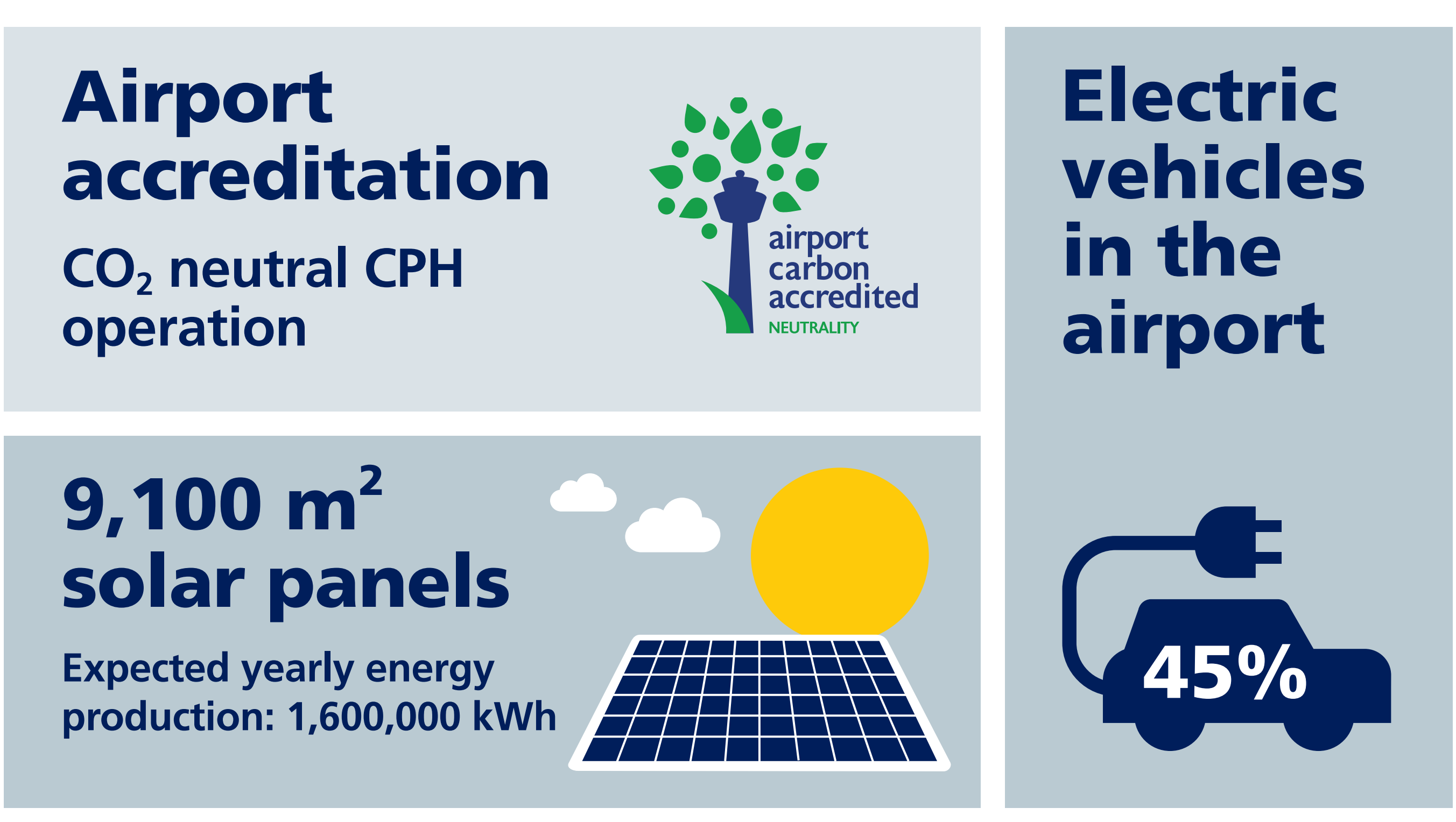
Terminal area



Seamless airport



Climate efforts



Digital passenger services

